



PEARTM
MEADOWS
TANGMARG

2026 Pear Meadows

T a n g m a r g | G u l m a r g

Premium duplex rooms with stunning mountain view in Tangmarg, just 15km before Gulmarg. Experience luxury stay with modern amenities and authentic hospitality. Pear Meadow's offers two premium duplex rooms with breathtaking mountain view, combining modern comfort with authentic Kashmiri hospitality. Located in the soothing natural charm of Tangmarg, our cottage promises a restful stay perfect for families, couples, and solo travelers seeking a peaceful retreat near Gulmarg. Enjoy panoramic view, modern amenities, and the warmth of Kashmir.



+91-908 66 66 466
reservations@pearmeadows.com

Hardumadam, Khaipora Road, Opp. Indian
Oil Petrol Pump, Tangmarg, Gulmarg - 193402



PEARTM
MEADOWS
TANGMARG



Registered with
department of Tourism J&K



Registered department of
Food Safety (FSSAI)

@pearmeadows

pearmeadows

www.pearmeadows.com

About Pear Meadow's *Luxury Cottage in Tangmarg Gulmarg*

In the Heart of Gulmarg's Serene Mountains, just 15 kilometers before the world-famous Gulmarg, Pear Meadow's stands as a sanctuary of premium hospitality and natural beauty. Our boutique cottage represents more than just accommodation—it's a carefully crafted experience designed for discerning travelers who seek both luxury and authenticity in the heart of Kashmir.

Born from a vision to create the perfect mountain retreat, Pear Meadow's combines contemporary comfort with the timeless charm of Kashmiri architecture. Each element of our property has been thoughtfully designed to harmonize with the surrounding landscape, from the strategically placed windows framing panoramic mountain views to the locally-inspired architectural details that pay homage to Kashmiri heritage.

What truly sets Pear Meadow apart is our dedication to crafting personalized experiences. We understand that every traveler's journey is unique, whether you're a family making cherished memories, a couple enjoying a romantic honeymoon, a solo adventurer seeking tranquility, a remote worker looking to work from the mountains, or someone planning a long, relaxing stay surrounded by nature's beauty.

Our Hospitality Philosophy

At Pear Meadow's, we believe luxury lies in simplicity, comfort, and connection—to nature, to local culture, and to oneself. We're not just providing rooms; we're curating moments that become cherished memories.

The Pear Meadow's Difference

- **Exclusive Privacy:** Unlike crowded hotels, we offer only two premium duplex rooms in the entire cottage, ensuring a completely intimate and uncrowded retreat for our guests.
- **Balanced Comfort:** We perfectly blend modern hotel amenities like AC and smart TVs with the personalized warmth of a homestay, offering the best of both luxury and comfort.
- **Unique Kitchen:** Our separate, fully- equipped modular kitchen provides unmatched flexibility for meals, a key advantage for families and long stays that most accommodations lack.
- **Perfect Location:** Situated in peaceful Tangmarg meadows, we offer serene tranquility away from the hustle while remaining a short, scenic drive to the Gulmarg attractions.
- **Culinary Freedom:** Fully equipped modular kitchen for homely meals amid mountains.
- **Digital Nomad Ready:** High-speed WiFi and dedicated workspaces with inspiring views.

Our Kashmir Story

Pear Meadow's isn't just a place to stay, it's the essence of its location brought to life. Our name translates the local Kashmiri "Tangmarg" into English, meaning "Pear Meadow's," weaving the poetry of this land directly into your stay. We offer an escape defined by exclusive privacy in our two premium duplex rooms, where modern comfort meets the authentic warmth of Kashmiri hospitality, complete with a unique modular kitchen. Here, you don't just visit Tangmarg; you experience its tranquil soul, perfectly positioned between serene meadows and the adventure of Gulmarg.

Pear Meadow's was conceived by a family with deep roots in Kashmir's hospitality industry and a passion for showcasing the region's authentic beauty. After years of welcoming guests to traditional houseboats and hotels, we recognized a growing need for a different kind of stay—one that offered modern comfort without compromising the authentic Kashmiri experience.

The Cottage Experience



Our 25,800 square foot property is designed as a single cottage housing two independent duplex suites—Sunrise and Sunset. This intimate scale ensures privacy while fostering a sense of community among guests when desired. The common areas include a beautifully landscaped garden, multiple vantage points for photography, and spaces designed for relaxation and connection with nature.

Prime Tangmarg Location



Situated at 6,700 feet in the Tangmarg valley, Pear Meadow's offers the perfect base for exploring Gulmarg's attractions while retreating to peaceful surroundings each evening. We're strategically located 25 minutes from Gulmarg's main attractions, 45 minutes from Srinagar airport, and walking distance from local markets where you can experience authentic Kashmiri daily life and culture.nature.

Our Commitment to Kashmir

♥ Supporting Local Community

All our staff are from surrounding villages, and we source produce from local farms and Kashmiri artisans, supporting the regional economy



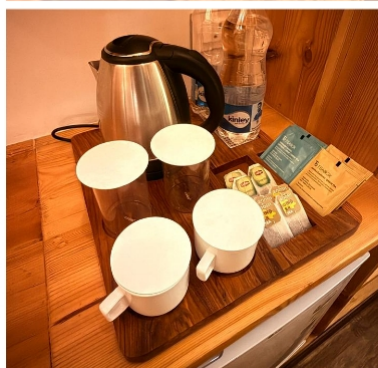
Eco-Friendly Practices

Waste segregation, water conservation, and minimal plastic use throughout our operations in beautiful Kashmir.



Cultural Preservation

We promote Kashmiri arts, cuisine, and traditions through curated experiences that help preserve our rich cultural heritage for guests.



Pear Meadows Highlights



Exterior Cottage

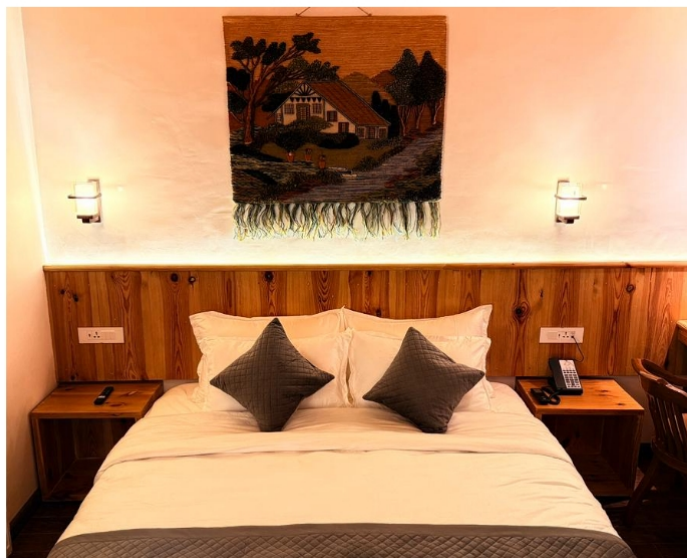
Unwind in the Heart of the Himalayas











Washroom



Comfort Corner

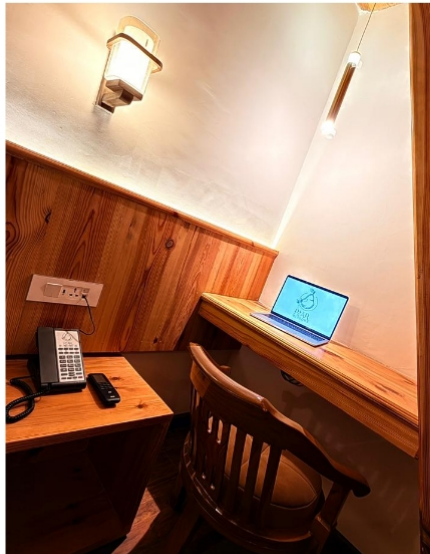


Washroom

Comfort Corner



Amenities



Modular

Kitchen

Where Flavor Meets Design



View



View



View



Luxury Amenities At Pear Meadows

Luxury Duplex Rooms

The Cottage features two exclusive duplex rooms that offer a warm, private escape, each complete with an attached washroom and AC to keep you comfortable in every season. Spacious and inviting, these rooms open up to sweeping views of Tangmarg's majestic mountains and tranquil pine forests, letting you wake up to nature's quiet charm each day.

Prime Location

Peacefully set in Tangmarg, just 15 km before Gulmarg and about 50 minutes from Srinagar Airport, the cottage is the perfect base for exploring Kashmir. Located in the heart of Gulmarg on the tranquil banks of the Babal Canal, it offers a front-row view of both sunrise and sunset, with the Apharwat and Nanga Parbat mountain ranges clearly visible. It's a calm, scenic retreat surrounded by nature, yet close to all the beauty and adventure Gulmarg is known for.

Modern Comforts

The cottage is designed for complete comfort, offering 24×7 hot water and high-speed internet. Since Kashmir is a cold zone, the space focuses on a robust heating system with underfloor heating and imported radiators that keep every corner warm. You'll also find smart TVs, mini fridges, secure lockers for peace of mind, and study tables that make the cottage perfectly work-friendly.

Modular Kitchen

The kitchen feels warm and home-ready, equipped with an OTG for cozy baking, an induction cooktop and hob for quick or elaborate meals, a trusty toaster, and plenty of crockery for everyday comfort. You'll also find an air fryer, rice cooker, mixer grinder, and juicer to make cooking effortless, a water purifier for fresh drinking water, everything you need for a space that instantly feels like home.

Panoramic view

Large windows open up to breathtaking views of the Tangmarg forests and the surrounding Pir Panjal range of the Western Himalayas. Just steps away lies a beautiful pine forest, perfect for peaceful morning walks, quiet moments in nature, and capturing stunning selfies among the tall trees and serene surroundings. It's a refreshing escape where nature feels close enough to touch — and at night, the sky turns crystal clear, offering a long, star-studded view that feels truly magical.

Hygiene & Safety

The cottage is designed for complete comfort, offering 24×7 hot water and high-speed internet. Since Kashmir is a cold zone, the space focuses on a robust heating system with underfloor heating and imported radiators that keep every corner warm. You'll also find smart TVs, mini fridges, secure lockers for peace of mind, and study tables that make the cottage perfectly work-friendly.

Facilities

- Centrally Heated Rooms
- 24×7 Hot & Cold Water
- Air-Conditioned Rooms
- High-Speed Wi-Fi Connectivity
- Scenic Views & Serene Surroundings
- Self-Cooking Option
- CCTV Surveillance for Security
- In-Room Digital Safe
- Mini Refrigerator
- Flat-Screen Smart TV
- Comfortable Study / Work Desk
- Hair Dryer
- Mini Refrigerator
- Fresh Linen & Towels
- Daily Housekeeping (on request)
- Power Backup
- Private On-Site Parking

Explore Nearby Destinations

Discover the Best of Kashmir from Pear Meadow's Prime Location

Perfectly Located for Exploration

Pear Meadow's strategic location in Tangmarg makes it the perfect basecamp for exploring Kashmir's most beautiful attractions. Most destinations are within 30-60 minutes drive, allowing you to maximize your time experiencing the beauty rather than traveling.

15km
To Gulmarg

8-27km
Range to local attractions

20-45min
Average drive time

45km
to Srinagar Airport

Gulmarg & Adventure Destinations

15 km

30 mins drive

Gulmarg

World-famous skiing destination and meadow of flowers. Enjoy golfing at the highest green golf course in the world, skiing and snowboarding in winter, and gondola rides with breathtaking Himalayan views.

Best Time to Visit: June-October for flowers, December-March for snow

Highlights: Gondola ride, Golf course, Skiing, snowboarding, Pony rides

Entry Fee: ₹50 per person + vehicle charges

16 km

Drive + Gandola

Apharwat Peak (Phase 2 via Gandola)

The highest point of Gulmarg Gondola (Phase 2) at 13,780 feet offering panoramic views of Himalayan peaks including Nanga Parbat. Requires buying tickets for both Phase 1 (Kangdoori) and Phase 2.

Gondola Timings: 10:00 AM to 4:00 PM (weather permitting)

Ticket Cost: Phase 1: ₹800, Phase 2: ₹1000 (approx)

Best For: Photography, Snow activities, Mountain views

Natural Beauty & Scenic Spots

16 km

30 mins drive

Lavender Fields

Vast expanses of fragrant lavender blooms creating purple carpets against mountain backdrop. Perfect for photography and experiencing Kashmir's floral beauty.

Blooming Season: June to August

Best Time to Visit: Morning for best light

Activities: Photography, Walks, Picnics

19 km

45 mins drive

Strawberry Fields

Lush strawberry plantations where you can pick fresh strawberries (seasonal) and enjoy the sweet aroma filling the mountain air.

Harvest Season: May to July

Experience: Fruit picking, Farm visits

Local Products: Fresh strawberries, jams, preserves

27 km

1 hour drive

Botapathri

Beautiful meadow surrounded by pine forests, perfect for nature walks and picnics. Less crowded than Gulmarg offering serene natural beauty. (Permission required)

Known For: Pine forests, Meadows, Tranquility

Activities: Picnics, Photography, Nature walks

Ideal for: Family outings, Romantic getaways

Waterfalls & Natural Wonders

8 km

20 mins drive

Drung Waterfall

Majestic waterfall cascading down rocky cliffs, especially spectacular during spring snowmelt. Easy access makes it perfect for a short refreshing trip.

Best Time: April-July for full flow | Dec-Mar for frozen waterfall

Facilities: Parking available, Viewpoints

Tips: Wear non-slip shoes, Carry raincoat if going close

13 km

30 mins drive

Shrunz Waterfall

Beautiful multi-tiered waterfall surrounded by lush greenery. The mist from the falls creates rainbows on sunny days making it magical for photography.

Season: Year-round, best in monsoon

Features: Multi-tiered, Rainbows, Natural pool

Access: Short walk from parking area

Scenic Viewpoints & Traditional Villages

12 km

35 mins drive

Rangmarg

Vibrant meadow offering spectacular sunset views over the valley. Named “Colorful Meadow” for its changing hues throughout the day.

Best For: Sunset views, Photography

Features: Valley views, Colorful flowers

Timing: Evening for best sunset

13 km

30 mins drive

Baderkoot View Point

Panoramic viewpoint offering 360-degree views of surrounding valleys and mountains. Perfect spot for landscape photography.

View: Valley panoramas, Distant peaks

Facilities: Viewing platform, Roadside Parking

Best Time: Clear morning for mountain views

10 km

20 mins drive

Babareshi

Traditional Kashmiri village offering authentic local experiences. Witness traditional architecture and daily village life.

Experience: Local culture, Traditional homes

Activities: Village walks, Photography

Local Crafts: Handicrafts, Woolens

17 km

40 mins drive

Ringawali

Quaint village known for its apple orchards and traditional Kashmiri lifestyle. Experience rural Kashmir at its authentic best.

Known For: Natural Landscapes, Traditional lifestyle

Season: April-Oct

Experience: Forest walks, Local interactions

20 km

45 mins drive

Gogaldara

Scenic village offering beautiful valley views and traditional Kashmiri hospitality. Perfect for those seeking offbeat experiences.

Features: Valley views, Terraced fields

Activities: Nature walks, Photography

Local Produce: Saffron, Apples, Walnuts

Other Popular Kashmir Destinations

54 km

1hr 35 mins drive

Doodhpathri

“Valley of Milk” - beautiful grassland with smooth silky meadows, surrounded by dense forests. Named for its milky white appearance from a distance.

Best Time: April to October

Highlights: Rolling meadows, Pine forests

Activities: Pony rides, Photography, Picnics

106 km

2 hours 41 minutes drive

Sonamarg

“Meadow of Gold” - gateway to Ladakh. Famous for Thajiwas Glacier, trekking routes, and stunning mountain vistas.

Highlights: Thajiwas Glacier, Sindh River

Activities: Trekking, Camping, Photography

Best Time: May to October

128 km

2 hours 48 minutes drive

Pahalgam

“Valley of Shepherds” - base camp for Amarnath Yatra. Famous for Lidder River, Betaab Valley, and breathtaking mountain scenery.

Attractions: Betaab Valley, Aru Valley, Lidder River

Activities: Trekking, Fishing, Pony rides

Best For: Nature lovers, Adventure seekers

43 km

57 mins drive

Dal Lake, Srinagar

Iconic lake famous for houseboats, shikara rides, and floating markets. The heart of Srinagar’s tourism with Mughal gardens on its banks.

Must Do: Shikara ride, Visit Mughal gardens

Best Time: March to October

Nearby: Nishat Bagh, Shalimar Bagh

Transportation & Accessibility

Tangmarg Bus Stop

4 km

6 mins drive

Local bus station connecting to Srinagar, Gulmarg and nearby villages

Mazhom Railway Station

21 km

30 mins drive

Nearest railway station on the Jammu-Baramulla line

Nowgam Railway Station

50 km

1 hour drive

Major railway station in Srinagar with better connectivity

Srinagar International Airport

45 km

1 hour drive

Main airport for Kashmir with flights from major Indian cities

Policies & Terms

Important Information for Your Stay at Pear Meadow's

⚠ Important Notice

Note: Local Unmarried couples not allowed. All guests must present valid government-issued photo ID (Aadhar Card, Passport, Driving License, Voter ID) upon check-in.

If you have any questions or concerns about our Privacy Policy or how we handle your personal information, please contact us at shahatif@pearmeadows.com

By making a reservation and checking in, guests acknowledge that they have read, understood, and agreed to abide by all the terms and conditions during their stay at Pear Meadow's.

Booking and Stay Policies

1

Check-In and Check-Out

- 🕒 Check-in time is from 01:00 PM onwards
- 🕒 Check-out time is before 11:00 AM on the day of departure
- 📍 Early check-ins and late check-outs are subject to availability and may incur additional charges

2

Reservation and Payment

- 📧 All reservations require a valid email confirmation and 50% advance to secure the booking
- 📧 Full payment for the stay is due upon check-in
- 📧 Additional charges incurred during the stay must be settled upon check-out
- 📧 We reserve the right to pre-authorize credit/debit cards before arrival
- 📧 We reserve the right to charge for excessive cleaning, repairs, or replacement of damaged items

3

Children and Extra Guests

- 👤 Maximum number of guests per room is limited to the occupancy rate specified during booking
- 👤 Children under 5 years can stay in existing beds free of charge
- 👤 Extra beds are available upon request and subject to additional charges

4

Identification and Age Requirement

- 👤 All guests must present valid government-issued photo ID upon check-in (Aadhar, Passport, Driving License, Voter ID)
- 👤 Local Unmarried couples not allowed
- 👤 Minimum age requirement for check-in is 18 years
- 👤 Guests below 18 must be accompanied by a parent or legal guardian

5

Smoking Policy

- 🚭 Strict non-smoking policy in all indoor areas
- ✓ Designated smoking area available outside the premises

6

Pet Policy

- 🚫 Pets are not allowed on the premises
- ✓ Service animals as required by law are permitted

Cancellation Policy

Standard Cancellation Policy

Cancellation Timeframe	Cancellation Charge	Refund Amount
15 days or more before arrival	0%	Full refund of deposit
Within 15 days of arrival	50% of total booking	50% refund
Within 48 hours of arrival	80% of total booking	20% refund
No-show or failure to cancel	100% of total booking	No refund

Payment Policy

1

Additional Cancellation Information

- i Peak Season/Special Events:** Cancellation policy may be more restrictive during peak seasons
- i Non-Refundable Reservations:** Some rate plans may be non-refundable (clearly stated during booking)
- i Cancellation Procedure:** Contact our reservation team via phone/email with booking details
- i Refund Process:** Refunds processed within 14 business days to original payment method

1

Accepted Payment Methods

- ✓ Visa, MasterCard, American Express, Discover
- ✓ Bank Transfer / UPI / Online Transfers
- ✓ Cash (with credit card authorization)
- ✗ Personal Checks Not Accepted

2

Payment Procedures

- ☞ **Reservation Deposit:** 50% advance required to secure booking
- ☞ **Check-in:** Present credit card used for reservation
- ☞ **Pre-authorization:** Credit card pre-authorized for stay total + incidentals
- ☞ **Incidental Charges:** Deposit collected for potential incidental charges
- ☞ **Currency:** All charges in INR (Indian Rupees)
- ☞ **Taxes:** Applicable taxes added as per local regulations

House Rules and Liability

1

Damages and Theft

- Guests responsible for any damage to property during stay
- Not liable for loss of personal belongings or valuables
- Use safes/lockers provided for valuables

2

Behavior and Disturbances

- Guests expected to behave responsibly and respect others' peace
- Excessive noise or disturbances may result in eviction without refund
- Parties and events disturbing other guests are not permitted

3

Facilities and Amenities

- ✂ We reserve the right to close/limit access to facilities for maintenance
- ✂ Use amenities responsibly and at your own risk
- ✂ Not liable for accidents, injuries, or illnesses on premises

4

Weather and Road Conditions

- ☞ For safety during severe weather/road closures, we may shift reservations to similar property of equal/higher standard nearby
- ☞ For safety during severe weather/road closures, we may shift reservations to similar property of equal /higher standard nearby

5

Force Majeure

- Not liable for failure to perform due to circumstances beyond our control
- Includes natural disasters, fires, strikes, or other force majeure events

Privacy Policy

1

Information Collection and Use

- 🔒 Collect personal information for reservations and services
- 🔒 Use information to manage reservations and improve experience
- 🔒 Email may be used for updates, confirmations, and promotions (opt-out available)
- 🔒 Retain information only as long as necessary and as required by law

2

Security and Sharing

- 🔒 Implement security measures to protect personal information
- 🔒 Share information with service providers as needed for requested services
- 🔒 May share information if required by law or to protect legal rights
- 🔒 Use cookies to enhance browsing experience
- 🔒 Services not intended for children under 18

General Policies

1

Modification of Terms

- 📅 We reserve the right to modify or update these terms as necessary
- 📅 Guests will be informed of any changes in advance

Last Modified Date: 1st December 2025

2

Liability

- ⓘ Not liable for accidents, injuries, or illnesses on premises
- ⓘ Guests use facilities and amenities at their own risk



Contact Us

Ready to experience luxury Kashmir hospitality?
Contact us for bookings, availability, and travel
inquiries about our premium duplex cottage in
Tangmarg near Gulmarg.

Phone and WhatsApp

☎ **+91-908 66 66 466**

Email

✉ reservations@pearmeadows.com

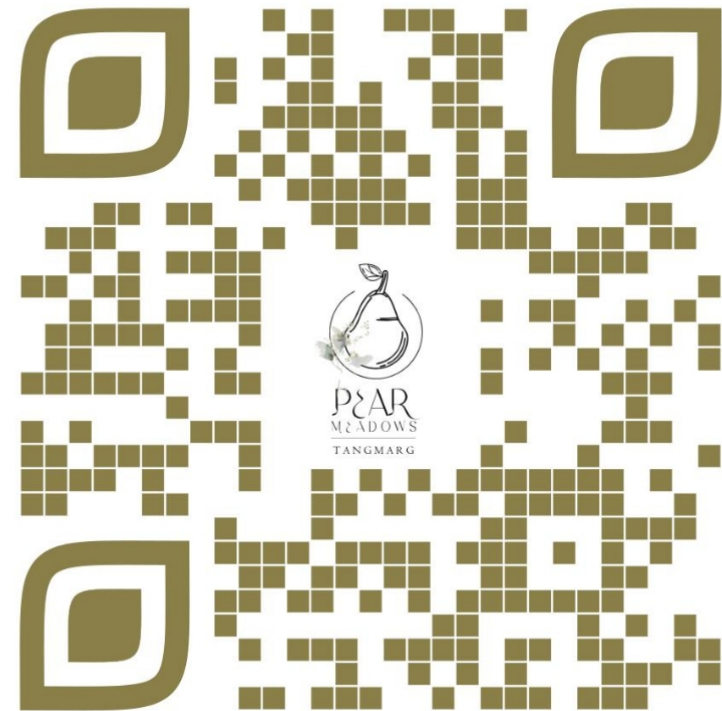
For Suggestions, Feedback or Complaints

✉ shahatif@pearmeadows.com

Address

📍 Hardumadam, Khaipora Road, Opp. Indian
Oil Petrol Pump, Tangmarg, Gulmarg - 193402

Digital Contact - Scan



📷 [@pearmeadows](#)

📺 [@pearmeadows](#)

☎ +91-908 66 66 466

📘 [@pearmeadows](#)



PEARTM
MEADOWS
TANGMARG

“Crafted for Comfort
Surrounded by Nature”